

# Appendix 1. Coverage of target sequences

Patient name: Demo Patient

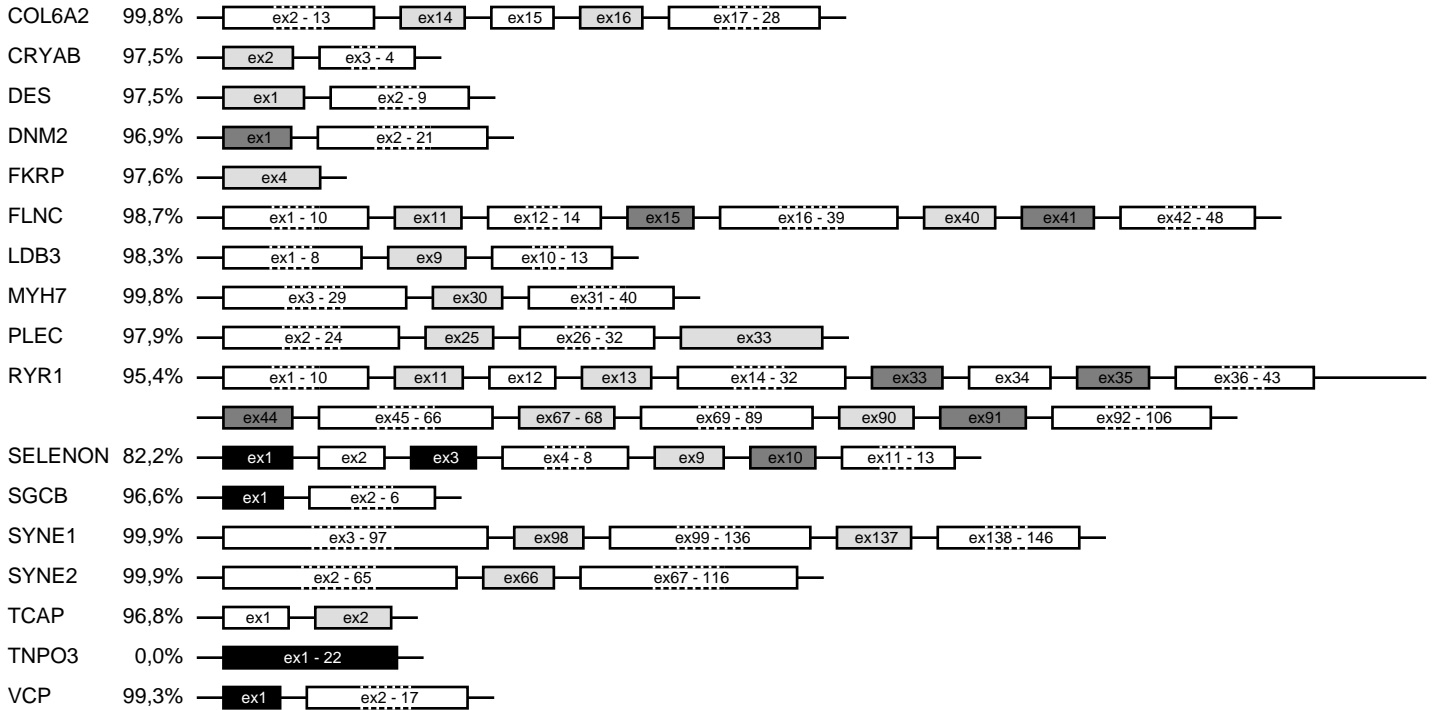
The following genes are 100% covered (with a depth of at least 20x):

ANO5, BAG3, CAPN3, CAV3, CAVIN1, COL6A1, COL6A3, DAG1, DMD, DNAJB6, DPM3, DYSF, EMD, FHL1, FKTN, GNE, LMNA, MATR3, MYOT, NEB, POMGNT1, POMT1, POMT2, SGCA, SGCD, SGCG, TRIM32, TTN

Certain parts of the following genes are not 100% covered (see details below)

## Legend:

- exons covered at 100% (with a depth of at least 20x)
- exons covered at 90-100% (with a depth of at least 20x)
- exons covered at <90% (with a depth of at least 20x)
- exons not covered (with a depth of at least 20x)



## Analysis statistics:

- number of genes: 45
- number of transcripts: 45
- transcripts covered at 100% (with a depth of at least 20x): 62,3%
- transcripts covered at 90-100% (with a depth of at least 20x): 33,3%
- transcripts covered at <90% (with a depth of at least 20x): 2,2%
- transcripts not covered (with a depth of at least 20x): 2,2%